



Conferences and meetings



DOUBLETREE  
by Hilton

BRISTOL SOUTH • CADBURY HOUSE



## Welcome to the house

Whether you're holding a conference, trade show, launch, exhibition, meeting, seminar or celebration, we will help make it a memorable occasion.

A tree-lined drive takes you to a magnificent 18th Century building, once the home to the 6th Marquis of Ailesbury. Inside you'll appreciate the dramatic fusion of the old and new, the result of the recent £1.5 million refurbishment.

Each of the meeting rooms boasts its own unique style, designed to accommodate any type of event and maximum choice of layout. All rooms include hi-speed broadband access and wi-fi internet points, as well as digital flat screens to allow you to view your laptop presentations in style.

Next to the main house is our contemporary-chic 4-star hotel. Set amongst a backdrop of woodland on Cadbury Hill, Doubletree by Hilton Cadbury House boasts unrivalled views across the Bristol Channel and beyond into Wales.

All 72 bedrooms have been uniquely designed; drawing inspiration from the historic surroundings and stylishly combining 21st Century comforts.

Very few venues can offer such an experienced corporate team, first class accommodation and facilities, attractive surroundings, plus extensive free parking.

We can also help incorporate into your plans team-building activities, outdoor pursuits and motivational speakers, together with the facilities of our award-winning health club and spa.

We look forward to showing you round.

---

### Daily Delegate Package

Meeting room including bottled still and sparkling water, cordials, sweets, pads, pens, flipcharts and stationery box.

Tea, coffee and Danish pastry on arrival

Mid-morning coffee and homemade biscuits

2 course buffet lunch and coffee

Mid-afternoon tea with homemade biscuits

Complimentary parking

### 24hr Conference Package

In addition to the Daily Delegate Package:

3-course dinner

Overnight Accommodation

Full English Breakfast

Complimentary use of the leisure facilities in the club (our multi-million pound award-winning health & wellness club) by prior arrangement.

Vegetarians and special dietary requirements catered for.



## The Drawing Room

Air con, natural daylight, terrace area



## The Landing

Natural daylight, feature wallpaper, TV screen for presentations



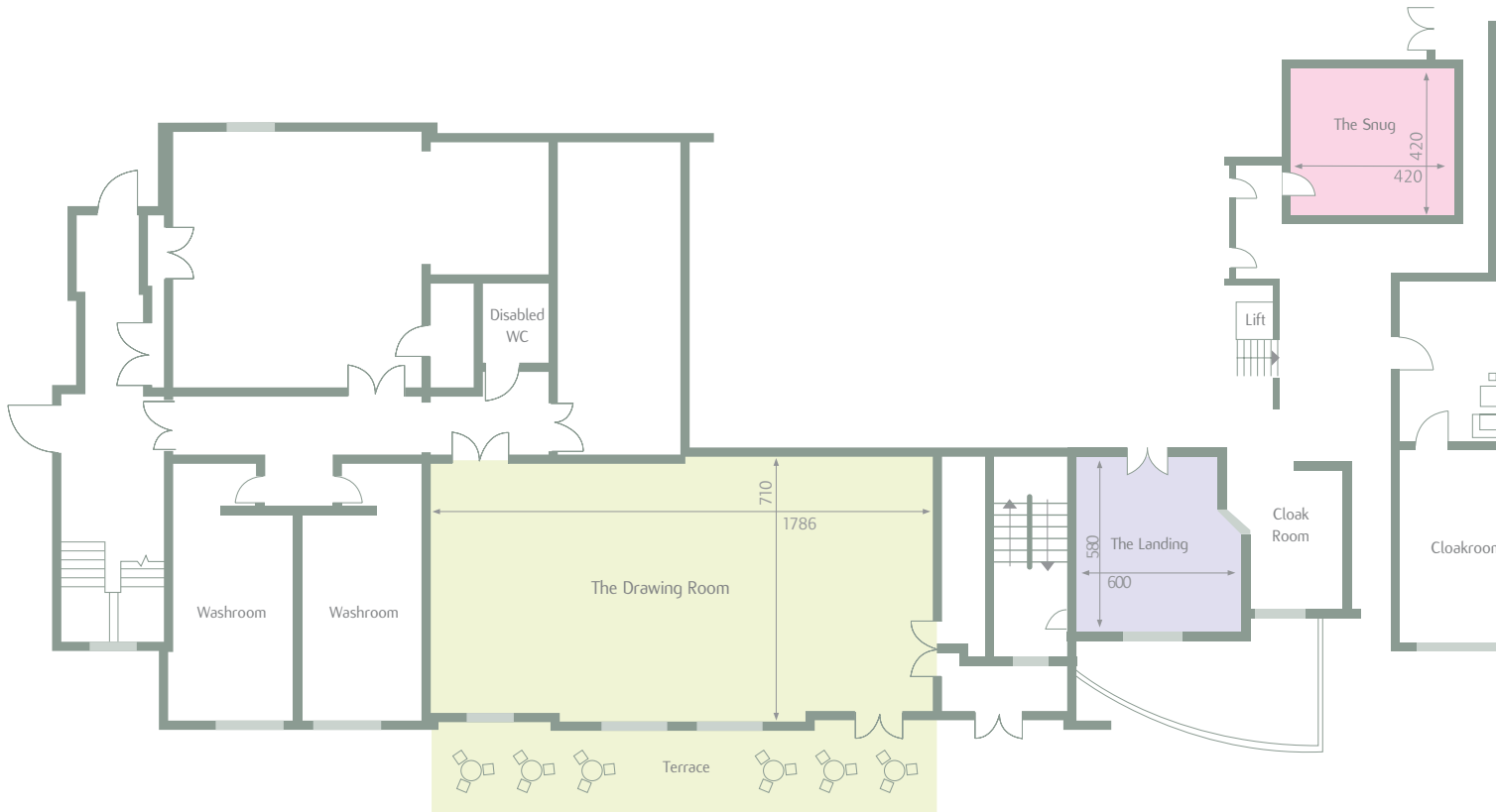
## The Snug

Natural daylight, TV screen for presentations



## The View

Natural daylight, can be used with Great Room, great for small meetings and interviews



Lower ground floor



## The Great Room

2 bars, dancefloor, stage, natural daylight, air con, decked terrace, rock feature



## The Boardroom

Natural daylight, beamed ceiling, access to decked terrace, TV screen for presentations



## The Study

Natural daylight, ideal for smaller meetings and interviews, TV screen for presentations



First floor

DIMENSIONS IN CENTIMETRES ■ POWER POINTS ● DATA POINTS  
 ■ FIXED LCD SCREEN ● BROADBAND ACCESS ● WI-FI ACCESS



## The Box Room

Interconnects with Master Room, natural daylight, access to decked terrace

## The Masters Room

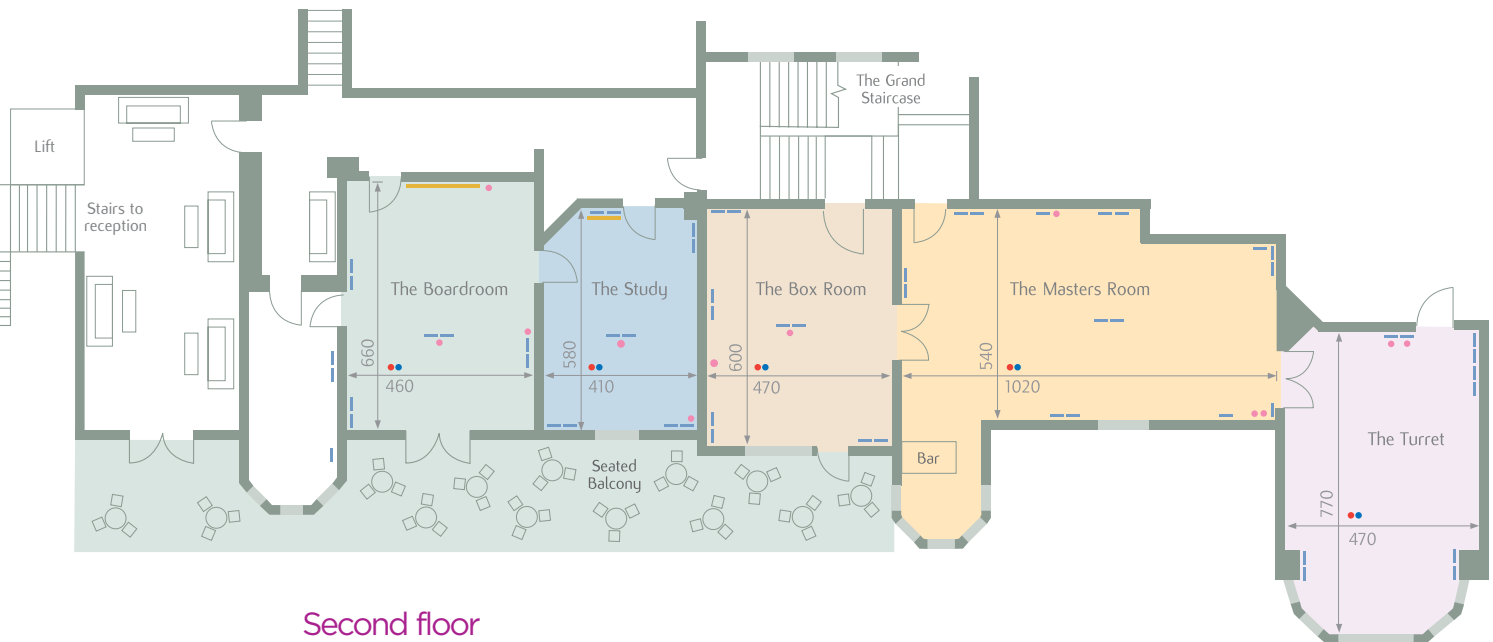
Own bar, interconnects with Box & Turret, natural daylight

## The Turret

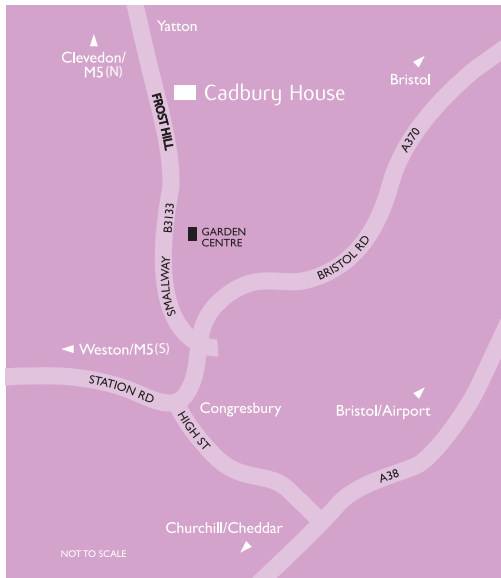
Interconnects with Master Room, natural daylight

## The Connaught

Separate building, natural daylight, air conditioning, TV screen for presentations



Room name	The Great Room	The Master Room	The Box	The Turret	The Boardroom	The Study	The Drawing Room	The Landing	The Snug	The View	The Connaught
<b>Floor Lift to floor</b>	<b>First Yes</b>	<b>Second Yes</b>	<b>Second Yes</b>	<b>Second Yes</b>	<b>Second Yes</b>	<b>Second Yes</b>	<b>L.Ground Yes</b>	<b>First Yes</b>	<b>First Yes</b>	<b>Second Yes</b>	
<b>Capacities</b>											
<b>Theatre</b>	250	50	30	30	-	-	70	24	-	-	50
<b>Classroom</b>	180	30	16	16	-	-	40	12	-	-	34
<b>Boardroom</b>	50	28	16	16	12	10	26	16	12	5	30
<b>U-shape</b>	50	28	16	16	-	-	24	12	-	-	28
<b>Cabaret</b>	180	24	-	-	-	-	40	-	-	-	24
<b>Lunch/Dinner</b>	350	50	20	20	12	10	60	16	-	-	50
<b>Dinner Dance</b>	350	50	-	-	-	-	60	-	-	-	-
<b>Reception</b>	450	80	-	-	-	-	100	30	-	-	100
<b>Dimensions</b>											
<b>Length</b>											
Feet	76'9"	33'6"	15'5"	25'3"	21'8"	19'	51'10"	29'5"	13'8"	6'5"	29'5"
(Metres)	(23.40)	(10.20)	(4.70)	(7.70)	(6.60)	(5.80)	(15.80)	(9.00)	(4.20)	(2.00)	(9.00)
<b>Width</b>											
Feet	53'10"	17'9"	19'8"	15'5"	15'1"	13'5"	23'4"	23'	13'8"	6'5"	23'
(Metres)	(23.40)	(5.40)	(6.00)	(4.70)	(4.60)	(4.10)	(7.10)	(7.00)	(4.20)	(2.00)	(7.00)
<b>Area</b>											
Feet	4133'	592'	301'	388'	323'	258'	367'	207'	56'	13'	207'
(Metres)	(384.00)	(55.00)	(28.00)	(36.00)	(30.00)	(24.00)	(112.00)	(63.00)	(17.00)	(4.00)	(63.00)
<b>Height</b>											
Feet	10'8"	10'10"	9'	9'6"	10'10"	11'10"	23'7"	10'10"	-	6'5"	-
(Metres)	(3.25)	(3.30)	(2.75)	(2.90)	(3.30)	(3.60)	(7.20)	(3.30)	-	(2.00)	-



## Location

Doubletree by Hilton Cadbury House is situated on the B3133, 4 miles from the M5 motorway (junctions 20 & 21). Yatton Railway Station is only 1 mile away and Bristol International Airport just 5 miles away.

Doubletree by Hilton Cadbury House

Congresbury, Bristol

United Kingdom BS49 5AD

Tel: +44 (0) 1934 834 343

Fax: +44 (0) 1934 834 390

Email: [info@cadburyhouse.com](mailto:info@cadburyhouse.com)

[www.cadburyhouse.com](http://www.cadburyhouse.com)

GDS Codes

Amadeus BRS495

Apollo 54001

Sabre 19177

Worldspan 19177

